

ポートアイランド確定図

S=1:1,000

港島中町3丁目

平成3年6月作成

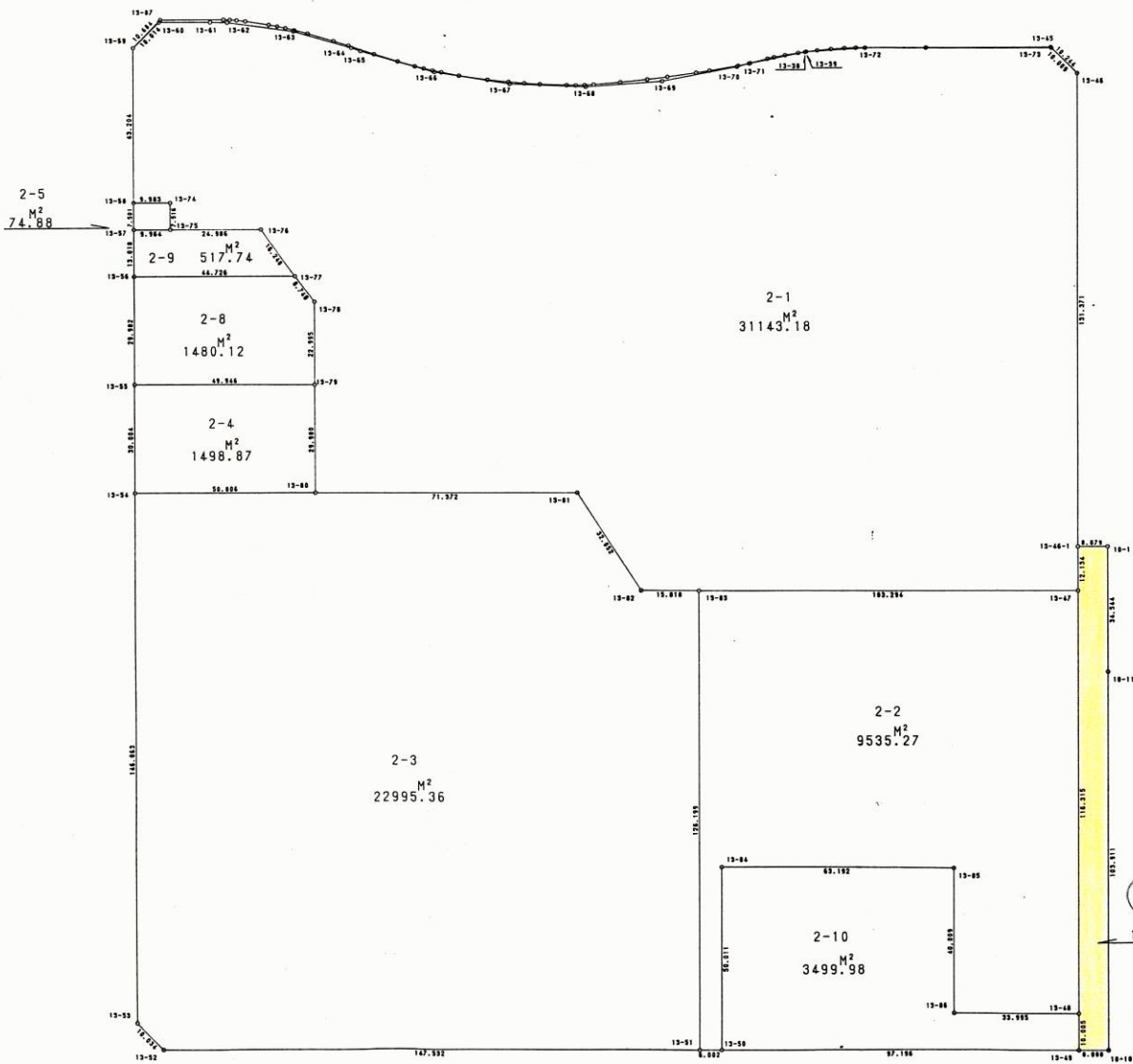
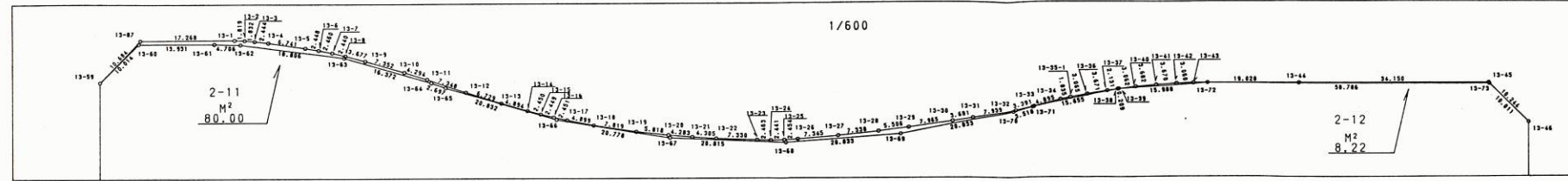
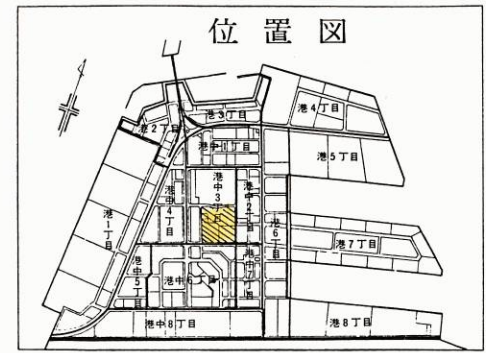


Table 2-1: Land details for lot 2-1. Columns include point name, X, Y, and perimeter. Total area is 31143.18 M².

Table 2-5: Land details for lot 2-5. Columns include point name, X, Y, and perimeter. Total area is 74.88 M².

Table 2-11: Land details for lot 2-11. Columns include point name, X, Y, and perimeter. Total area is 80.00 M².

Table 2-8: Land details for lot 2-8. Columns include point name, X, Y, and perimeter. Total area is 1480.12 M².

Table 2-9: Land details for lot 2-9. Columns include point name, X, Y, and perimeter. Total area is 517.74 M².

Table 2-2: Land details for lot 2-2. Columns include point name, X, Y, and perimeter. Total area is 9535.27 M².

Table 2-10: Land details for lot 2-10. Columns include point name, X, Y, and perimeter. Total area is 3499.98 M².

Table 2-3: Land details for lot 2-3. Columns include point name, X, Y, and perimeter. Total area is 22995.36 M².

Table 2-12: Land details for lot 2-12. Columns include point name, X, Y, and perimeter. Total area is 8.22 M².

Table 6: Land details for lot 6. Columns include point name, X, Y, and perimeter. Total area is 1114.77 M².

Table 2-4: Land details for lot 2-4. Columns include point name, X, Y, and perimeter. Total area is 1498.87 M².

港島18号線 神戸市中央区港島中町3丁目2番2地先 神戸市中央区港島中町3丁目2番1地先 自転車歩行者専用道路

玉野総合コンサルタント(株)調整

神戸市開発局

神戸地方支庁局に乙種(4.1)転写

港湾整備局新都市整備本部経営管理課